



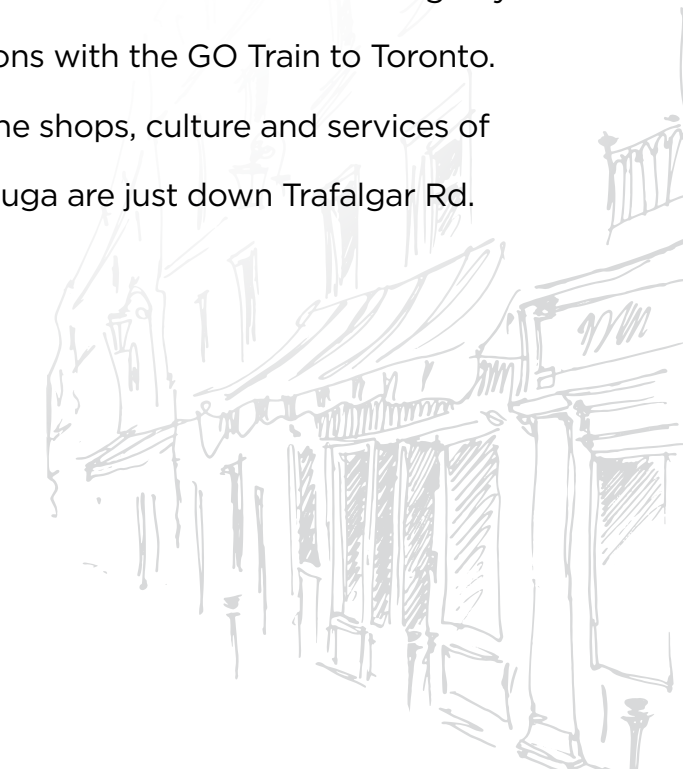
# TRAFALGAR SQUARE

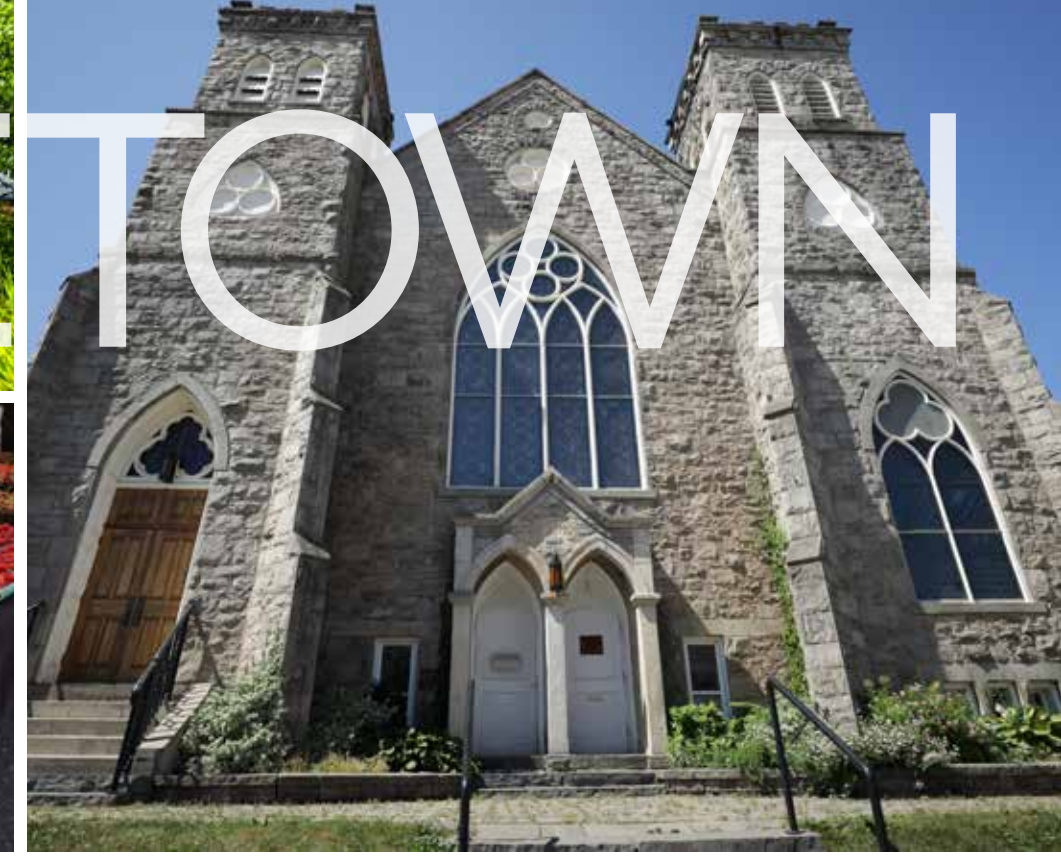
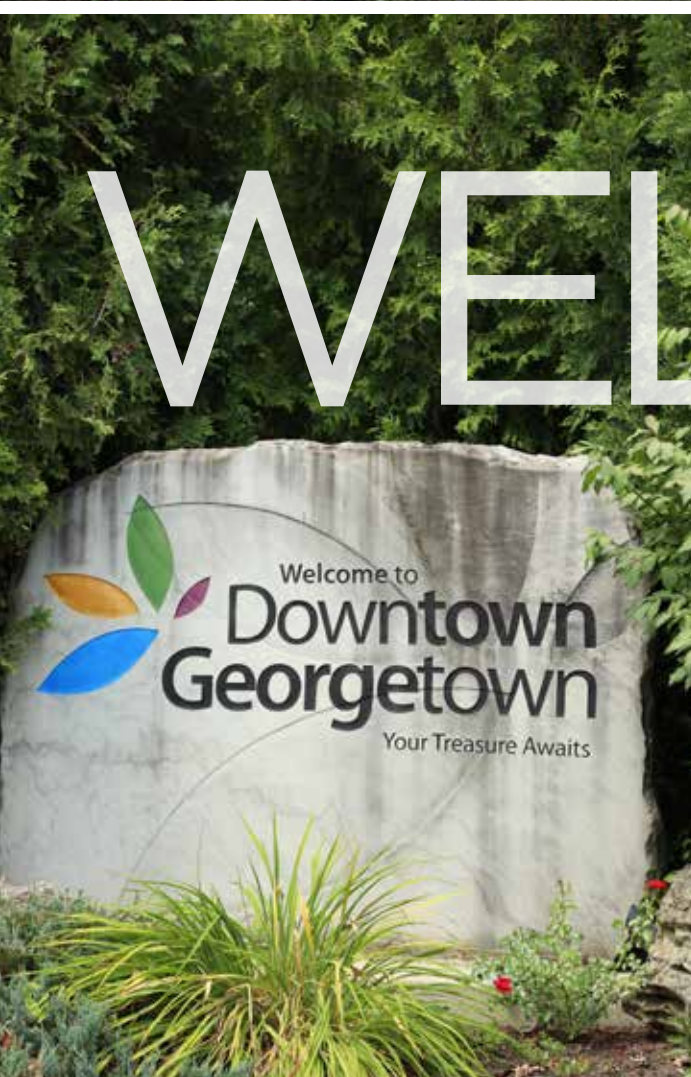




# SMALL TOWN BIG CITY

It's the perfect blend of city and country! Georgetown in Halton Hills has a vibrant sense of community. There's the Highland Games in June, the Farmer's Market on Summer Saturdays, a Labour Day Fall Fair since 1846, the Santa Claus Parade, and the Craft Beer Festival in September. Named for local settler George Kennedy, the first mills rose up along the banks of the Silver Creek back in the 1820's. Today, Georgetown has historic charm and big city connections with the GO Train to Toronto. And all the shops, culture and services of Mississauga are just down Trafalgar Rd.







## CLOSE TO EVERYTHING RIGHT NEXT TO NATURE

Here, in the heart of Georgetown,  
you're a five-iron from the golf course and a stone's throw from Silver Creek. It's ten minutes to the 401 and just five minutes to the GO Station, so you can get places fast. And you're a short stroll from the playing fields of Trafalgar Sports Park, the Hospital and the Civic Centre. Great schools, restaurants, hiking trails and shopping are all right around the corner. And the Fairgrounds are right in your backyard. There's so much to do when you live here!





# AMENITIES GALORE

## Restaurants

1. Angel's Diner
2. Boston Pizza
3. Eat Well Italian Food Truck
4. Georgetown Tandoori Indian Cuisine
5. Georgeview Open Kitchen Restaurant
6. Golden Fish & Chips
7. Goodfellas Wood Oven Pizza
8. House Of Buddha
9. Hungry Hollow Smokehouse & Grille
10. Imai Japanese Cuisine
11. Kyoto Sushi
12. Menchie's
13. Norval Pancake Factory
14. Pita Town
15. Pizzaiolo Gourmet Pizza
16. Quesada Burritos & Tacos
17. Shepherd's Crook
18. Shoeless Joe's
19. Swiss Chalet
20. Symposium Cafe Restaurant & Lounge
21. Terra Cotta Cookie Co Ltd
22. The Barber Towne Pub
23. The Cellar
24. The Mess Hall Pouterie
25. The Pickled Piper Bar & Grill
26. Uncorked on Main
27. Yong's Restaurant
28. Yoyo Japanese Restaurant

## Schools

1. Centennial Public School
2. Christ the King Catholic Secondary School
3. Gary Allan High School
4. George Kennedy Public School
5. Georgetown District High School
6. Halton Hills Christian School
7. Harrison Public School
8. Holy Cross Catholic Elementary School
9. Inkwell Montessori School
10. Joseph Gibbons Public School
11. Park Public School
12. Silver Creek Public School
13. St. Brigid Catholic Elementary School
14. St. Francis of Assisi Catholic Elementary School

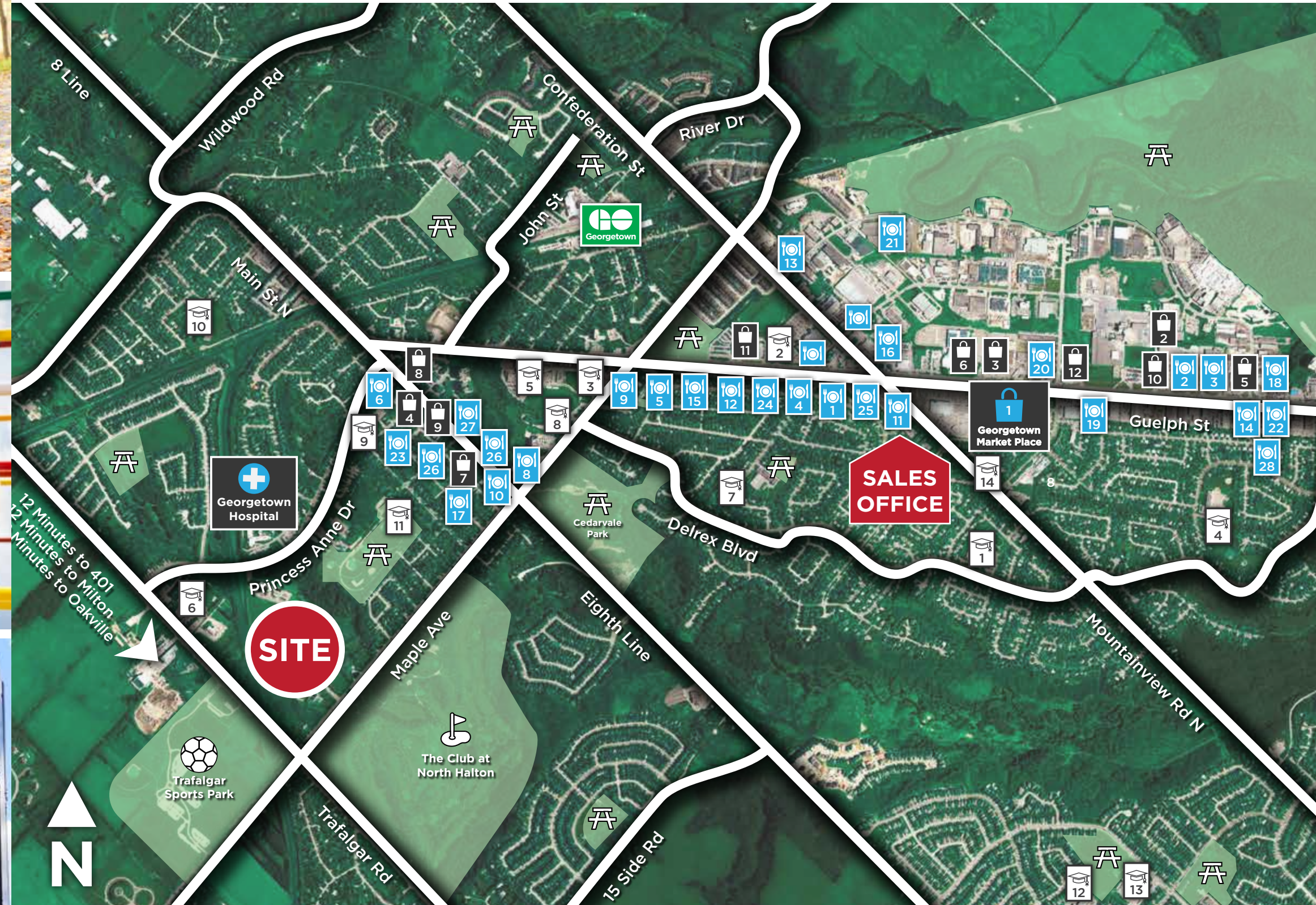
## Shopping

1. Georgetown Market Place
2. Carter's
3. Cassie's
4. Le Château
5. Mark's
6. Maurices
7. Northern Reflections
8. Showcase
9. Sport Chek
10. Walmart Georgetown Supercentre
11. Winners & HomeSense
2. Canadian Tire
3. Food Basics
4. Foodstuffs
5. FreshCo
6. M&M Food Market
7. McMaster's Meat & Deli
8. Mill St Cheese Market
9. Moxxi Boutique
10. PetSmart
11. Real Canadian Superstore
12. Shoppers Drug Mart

## Parks & Golf

- The Club at North Halton Golf
- Trafalgar Sports Park
- McNally Park
- Cedarvale Park
- Georgetown Fairgrounds
- Berton Blvd. Park
- Emmerson Park
- Remembrance Park
- Mary Street Park
- Dayfoot Drive Park
- Lions Club Park
- Armstrong Avenue
- Barber Mill Park
- John Street Park
- Meadowglen Park

- Shopping
- Schools
- Medical
- Go Station
- Golf Courses
- Parks
- Restaurants



# TIMELESS SETTING

Imagine life here at Trafalgar in a timeless setting where kids can play, families can grow, and life is meant to be lived well.

Picture your beautiful townhome on a curving crescent or private cul de sac, just a stroll from Halton Hills Civic Centre and the playing fields of Trafalgar Sports Park. This is where you want to live, in a place where small town charm is all around you, and the city is just close enough for comfort.



Site plan is artist's concept. E. & O. E.

# WELCOME TO TRAFALGAR SQUARE



# CLASSIC TOWNS



Rendering is artist's concept. E. & O. E.





Rendering is artist's concept. E. & O. E.

# SPACIOUS BEDROOMS





MODERN  
INTERIORS

# FEATURES & FINISHES

## EXTERIOR

- Superior designed modern elevations with stone, clay brick, stucco panelling on front and side elevations. Clay brick rear elevations.
- Exterior colour packages are pre-determined and pre-selected by lot and cannot be altered
- Maintenance free energy efficient vinyl casement or fixed glass windows throughout as per model type
- Self-sealing quality 25-year shingles, colour pre-determined and cannot be altered
- Maintenance free aluminum soffit, fascia, eavestrough and downspouts
- Sliding patio door(s) with screen or French door(s) as per model type
- Sectional roll-up garage doors, as per model type
- Two exterior hose bibs, one in garage and one at rear of lot
- Professionally graded and sodded lot
- Precast slab walkway from driveway to front porch
- Rear deck constructed of pressure treated decking and rail as per model type
- Precast slab at rear exit from garage and/or interior space on entry level
- Asphalt paved driveway (as per municipal requirements). Vendor not responsible for future settlement
- Exterior coach light at front door, rear door exit(s), and over garage
- Door from garage to house subject to grade
- Exterior plug at rear exit(s), and front porch, location to be determined by builder
- Aluminum exterior railings at front porch, if required due to grade conditions
- Metal insulated exterior entry door with weather stripping

## INTERIOR

### TRIM

- Approximate 8-foot ceilings on entry level, approximate 9-foot ceilings on main level and approximate 8-foot ceilings on upper level
- Modern 2 ¾ inch casing and 5 ¼ inch baseboard from Vendor's standard samples
- Natural red oak stairs with oak treads, oak veneer risers and stringers from entry level to main floor and from main floor to upper floor. Modern red oak newel posts and handrail and squared pickets in natural finish as per model type

- All interior doors to have brushed nickel lever hardware
- All ducts to be cleaned prior to closing

### PAINTING

- All interior walls to be finished with one (1) choice of paint from Vendor's samples
- Wood trim and interior doors painted white from Vendor's standard samples
- Smooth painted ceilings in bathrooms, kitchen/breakfast area, powder room and laundry room
- Ceilings in entry level including hallways, recreation room (as per model type), on main floor in family room and hallways and upper floor including hallway and bedrooms to be stippled with smooth border as per model type

### FLOORING

- Choice of 12" x 12" or 13" x 13" ceramic flooring in kitchen and breakfast area, all finished bathrooms on main and upper floors, in main entrance foyer and hall and laundry room as per model type, from Vendor's standard samples
- Natural pre-finished oak hardwood floor in main floor family room area as per model type from Vendor's standard samples
- 35-ounce carpet in (1) colour in main floor recreation rooms as per model type on upper floor hallway and in bedrooms from Vendor's standard samples
- Quality foam under pad for all carpeted areas

### KITCHEN

- Quality crafted cabinetry selected from Vendor's standard samples. Kitchens designed to fit 24 inch dishwasher, 36 inch refrigerator and 30 inch slide in range (not included). Rough-in dishwasher includes plumbing and electrical only with space for dishwasher, cabinet not included
- Breakfast bar and island as per model type
- Optional island as per model type
- Beautiful cabinetry with extended height upper cabinets, approximately 36 inches, bank of drawers, large islands, breakfast bars, quality hardware with soft close doors, and drawers and extended uppers over fridge
- Modern hardware from Vendor's standard selections
- Pantry as per model type for maximum storage
- Granite countertops from Vendor's standard selections

- Double stainless-steel drop-in kitchen sink with washer-less faucet
- Stainless steel exhaust hood fan over stove with 6-inch duct to exterior

### BATHROOMS

- White bathroom fixtures in all bathrooms
- Master bathroom ensuite to feature a frameless glass shower wall and door in clear glass with chrome hardware including door handle and hinges, beautiful ceramic tile on walls and ceilings, and recessed light, from Vendor's standard samples
- Quality crafted vanities in main and master bathrooms from Vendor's standard samples
- Choice of quartz countertop in master bathroom, with drop in sink and single lever faucet from Vendor's standard samples
- Choice of laminate countertop in main bathroom with drop in sink and single lever faucet from Vendor's standard samples
- Finished powder rooms to have pedestal sink and lever faucet from Vendor's standard sample
- Single lever faucet in showers and tubs as per Vendor's standard samples
- Exhaust fans in all bathrooms
- Privacy locks on all bathrooms
- Strip lighting above vanities and pedestal sink, location determined by Vendor
- Pressure balancing fixtures in all showers
- Water saving fixtures in all bathrooms and kitchen faucet
- White ceramic toilet paper holder and towel bar in all bathrooms. Location to be determined by Vendor

### LAUNDRY

- Laundry room area with connections for water and drain for washing machine, with electrical rough-in and vent for dryer as per model type. Laundry rooms do not include main floor drains.

### ENERGY SAVING FEATURES

- Forced air high-efficiency gas furnace with electronic ignition and heat recovery ventilation unit
- Water saving toilets and faucets
- LED light bulbs throughout
- Two interior motion sensor lights as per model type, in locations predetermined by Vendor
- Spray foam insulation in garage ceilings
- Ducts taped to minimize air leaks for high efficiency performance

### QUALITY CONSTRUCTION

- Engineered flooring system
- Subfloor is glued, screwed and sanded
- Windows and doors sealed with high quality caulking
- Quality 2" x 6" exterior wall wood frame construction
- Garage to be completely drywalled

### ELECTRICAL

- 100 Amp service
- Weatherproof GFI exterior electrical outlet located at front porch, exterior rear yard and upper deck off main floor, locations determined by Vendor
- White Decora switches and receptacles throughout
- Quality ceiling light fixtures with energy saving bulbs in kitchen, breakfast area, family room, upper hall and all bedrooms, main entrance foyer, hall and recreation room as per model type
- Smoke detectors as per Ontario Building Code
- Carbon monoxide detector as per Ontario Building Code
- All bathroom electrical duplex receptacles protected by ground fault interrupter
- Rough-in for central vacuum system dropped into garage
- Rough in keypad at main entrance for future wireless security system
- 2 roughed in Cat 6 location determined by Vendor
- 2 roughed in Cable runs location determined by Vendor
- Complete central air conditioning

All Purchasers' selections from Vendor's standard samples. A wide variety of upgrades and options are available. Specifications, terms and conditions are subject to change without notice. All sketches are artist's renderings only and do not form part of this agreement. Specifications can change without notice. All plans and specifications are subject to modification from time to time, according to Tarion Warranty Program rules and regulations. E & O.E. Sept 1, 2020.

### WARRANTY

Worthington Homes is backed by the Tarion Warranty Corporation.



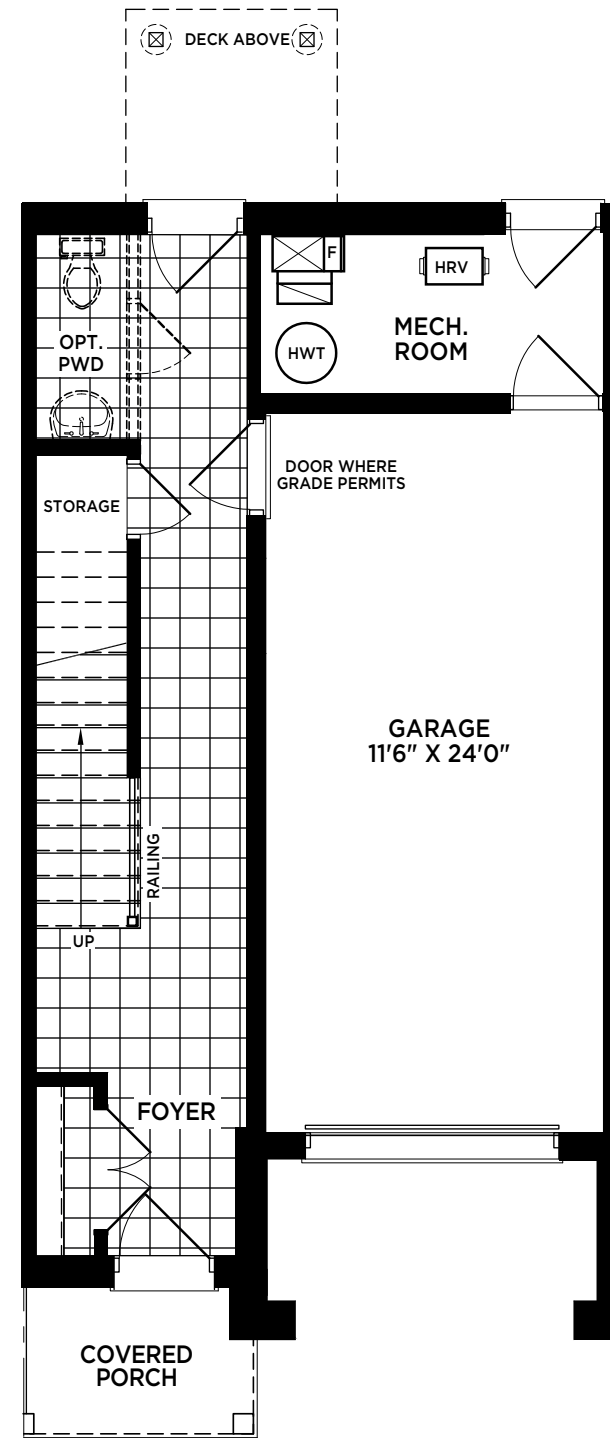
# THE LIMEHOUSE

1,733 SQ.FT.

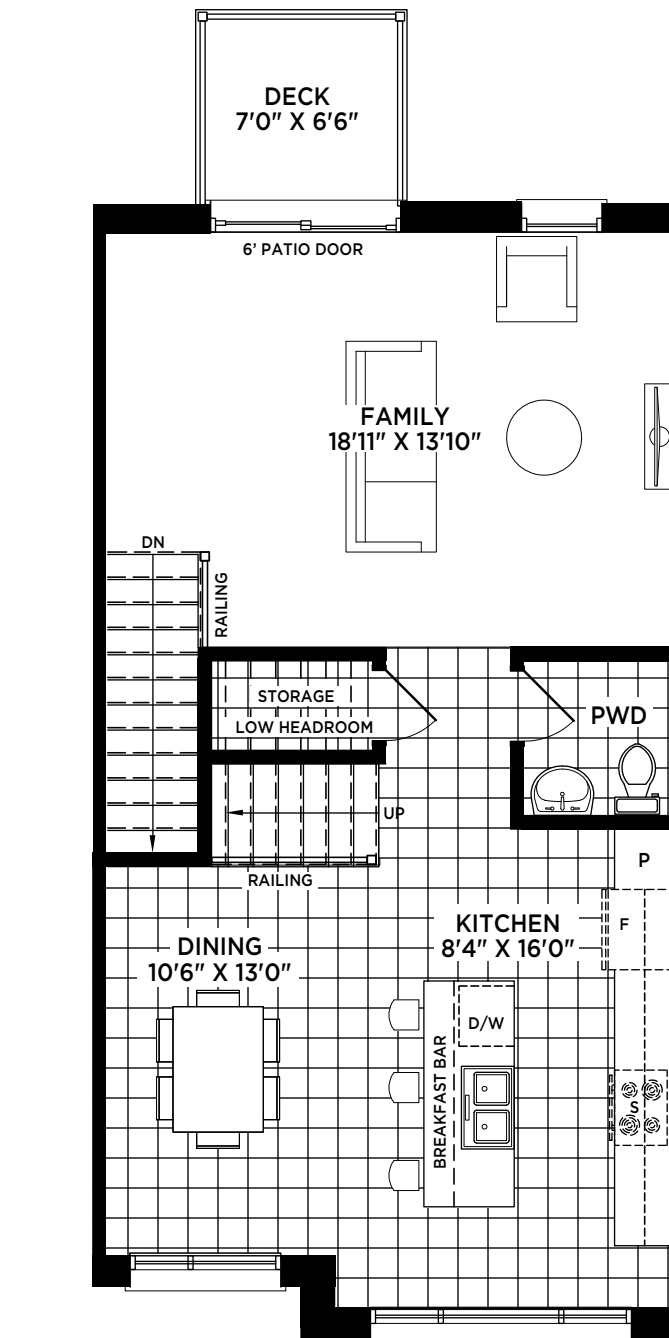
1,746 SQ.FT. ELEV. 2



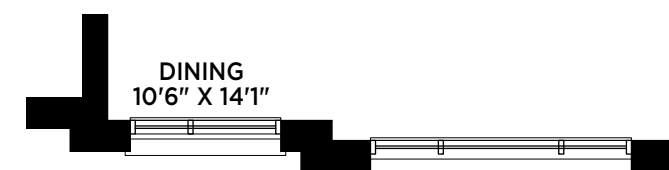
Choose your design. Then choose where it's located in the block!



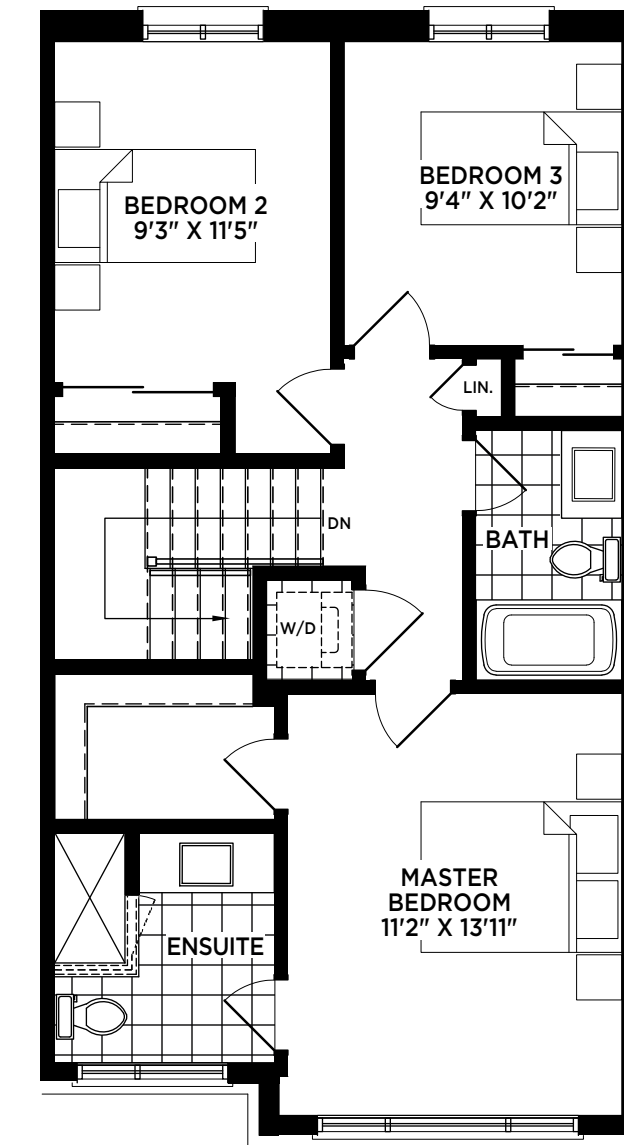
GROUND FLOOR



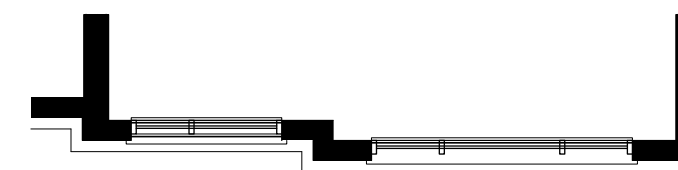
MAIN FLOOR



ELEV. 2



SECOND FLOOR



ELEV. 2

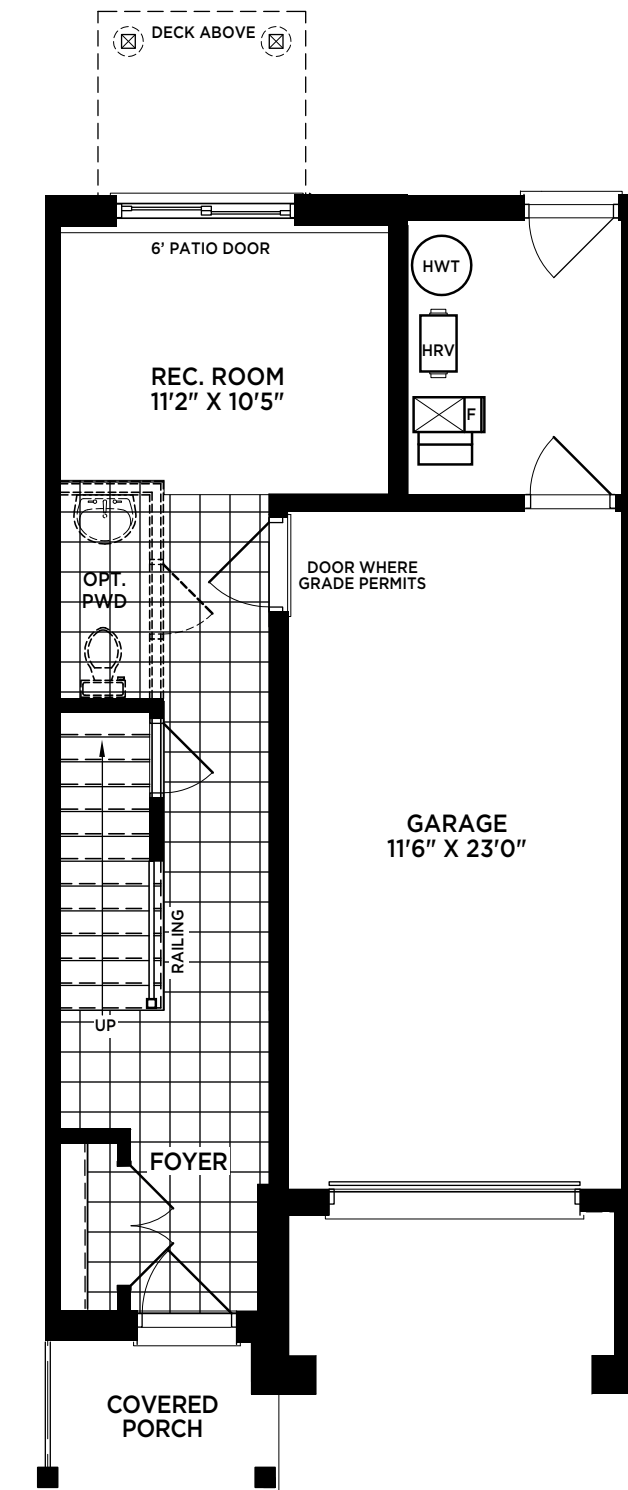
# THE FAIRGROUND

1,894 SQ.FT.

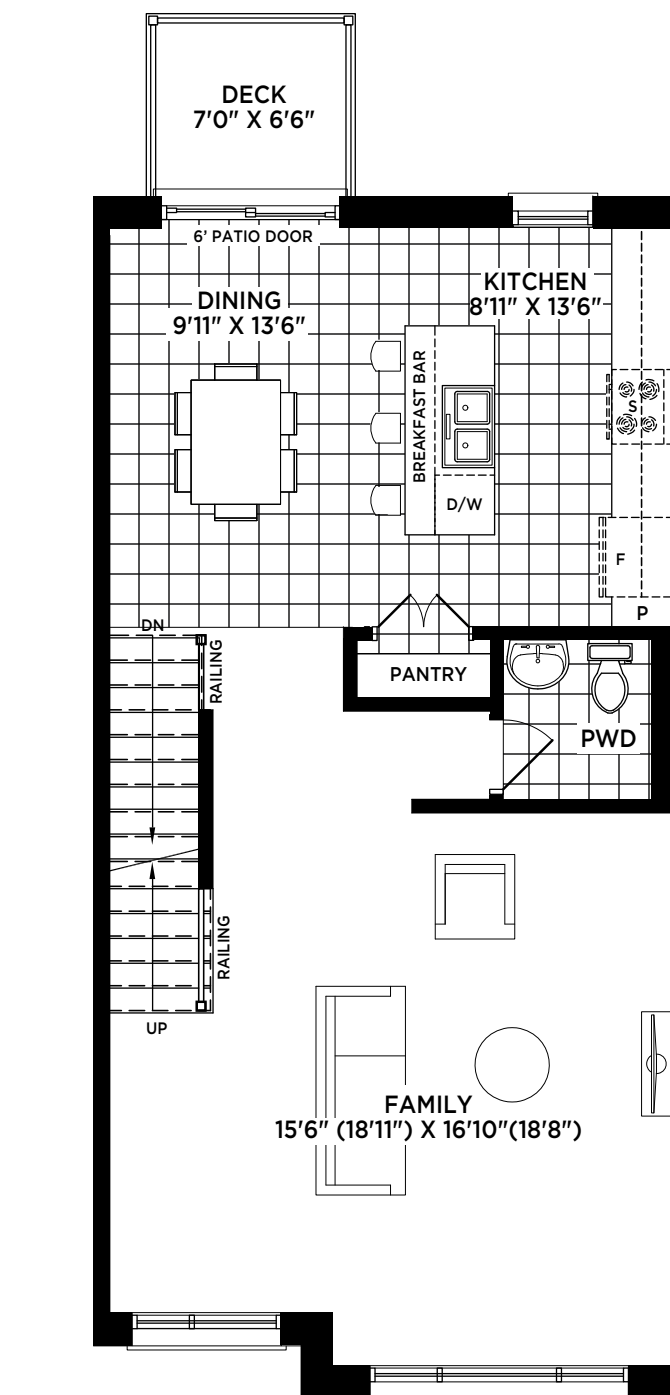
1,907 SQ.FT. ELEV. 2



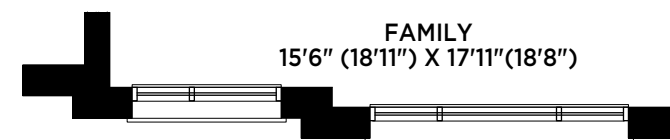
Choose your design. Then choose where it's located in the block!



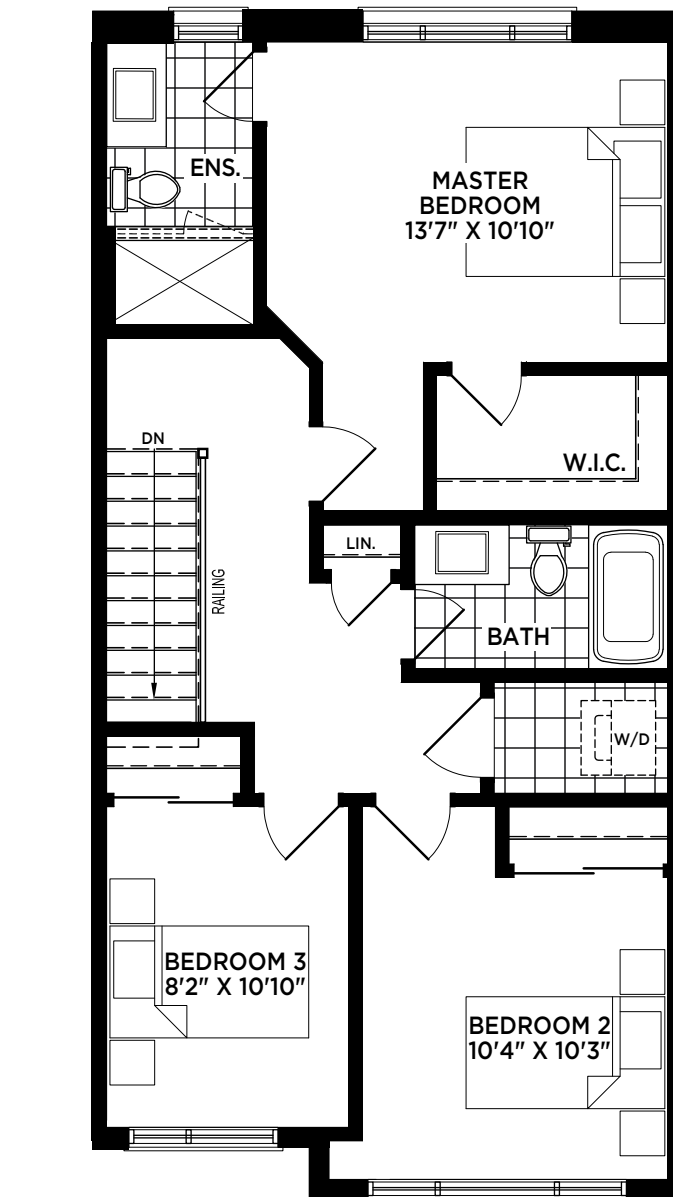
GROUND FLOOR



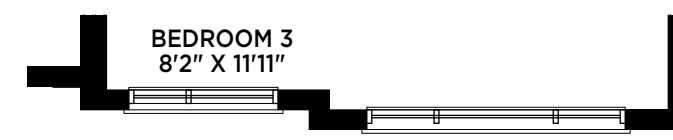
MAIN FLOOR



ELEV. 2



SECOND FLOOR



ELEV. 2

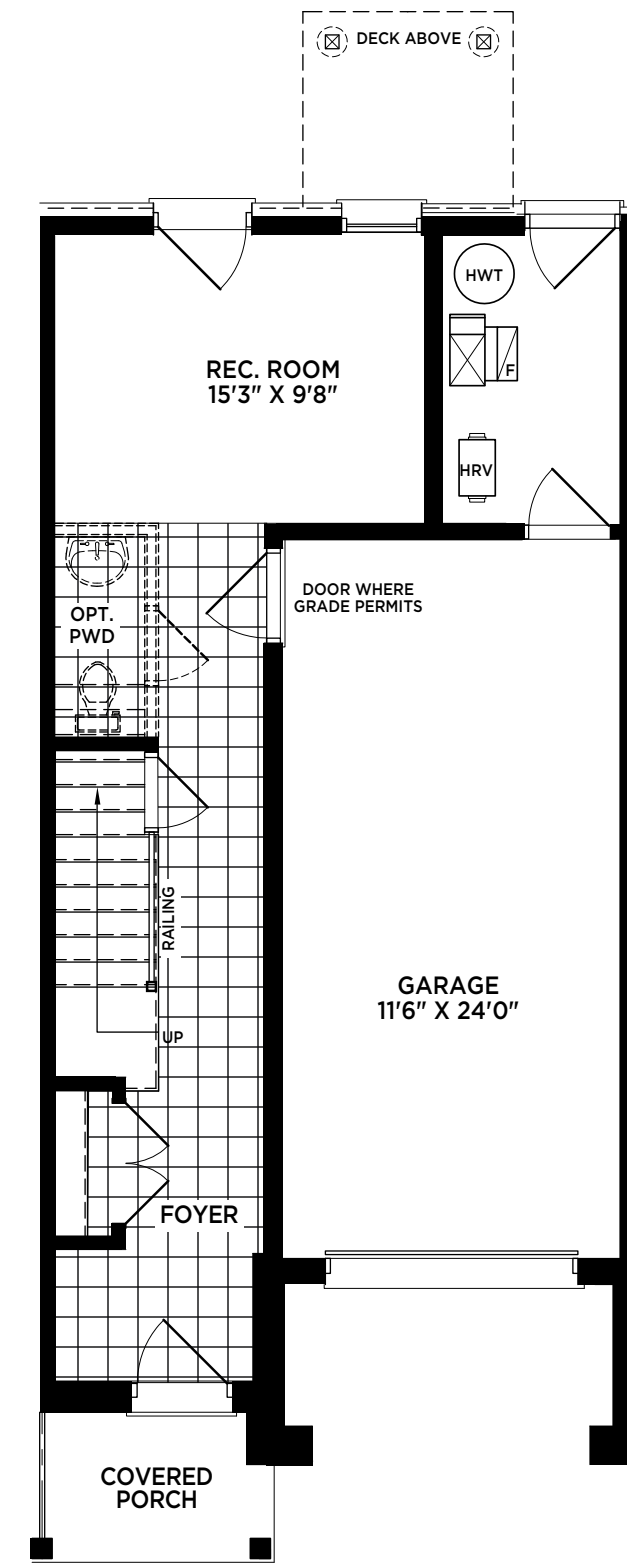
# THE WILDWOOD

1,991 SQ.FT.

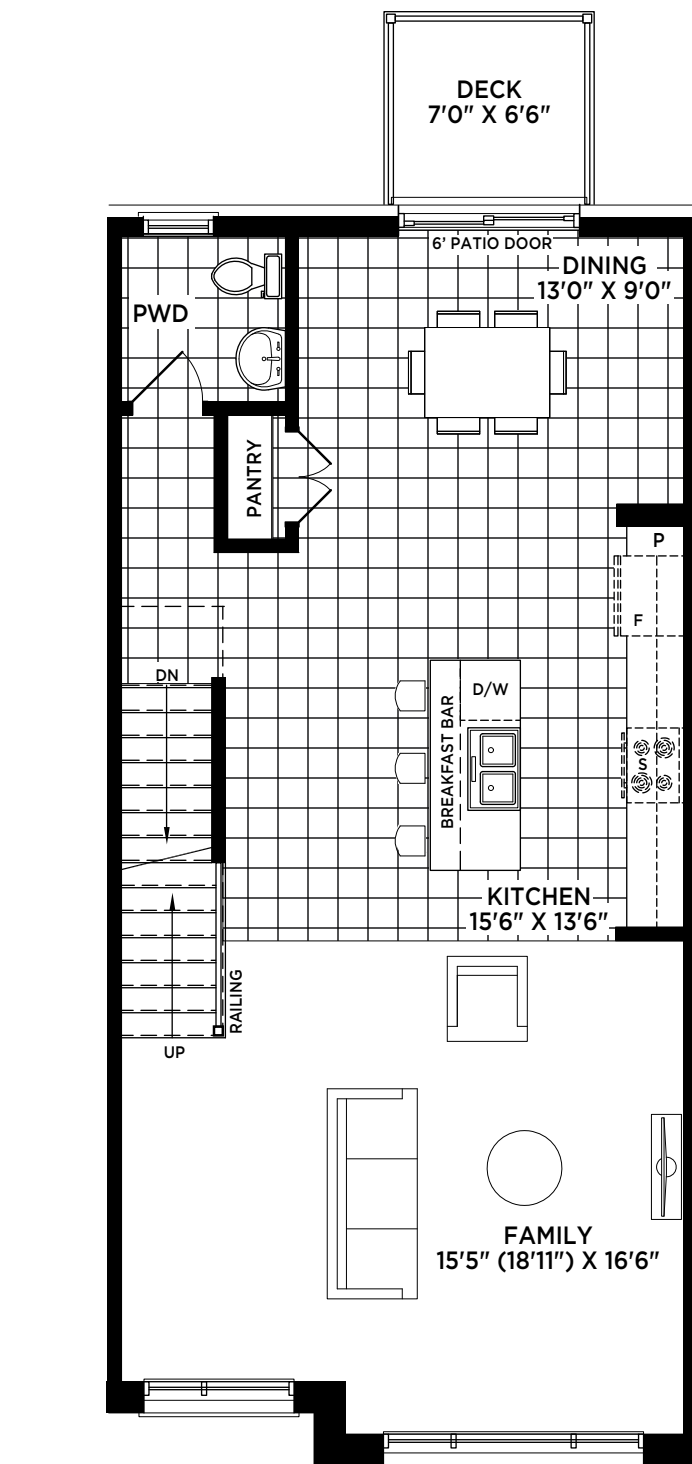
2,011 SQ.FT. ELEV. 2



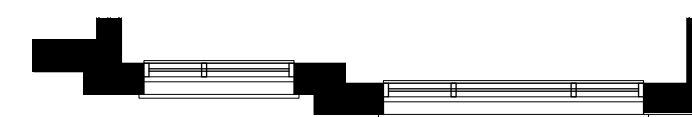
Choose your design. Then choose where it's located in the block!



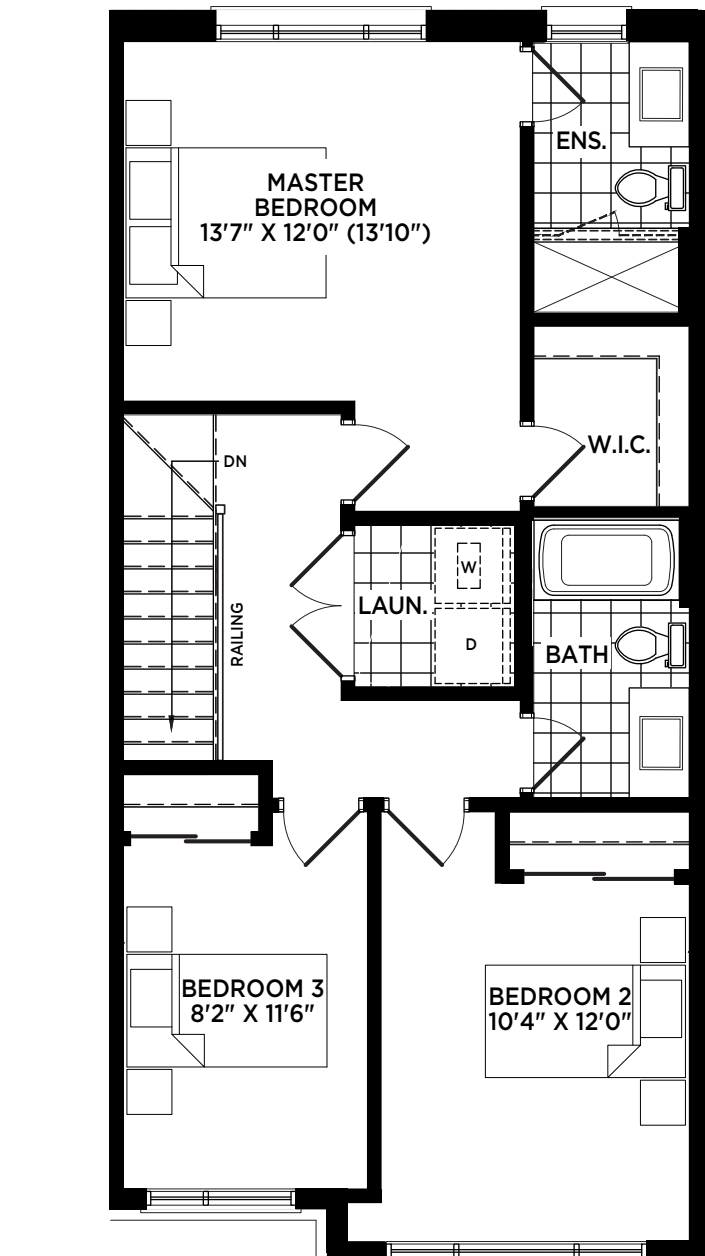
GROUND FLOOR



MAIN FLOOR



ELEV. 2



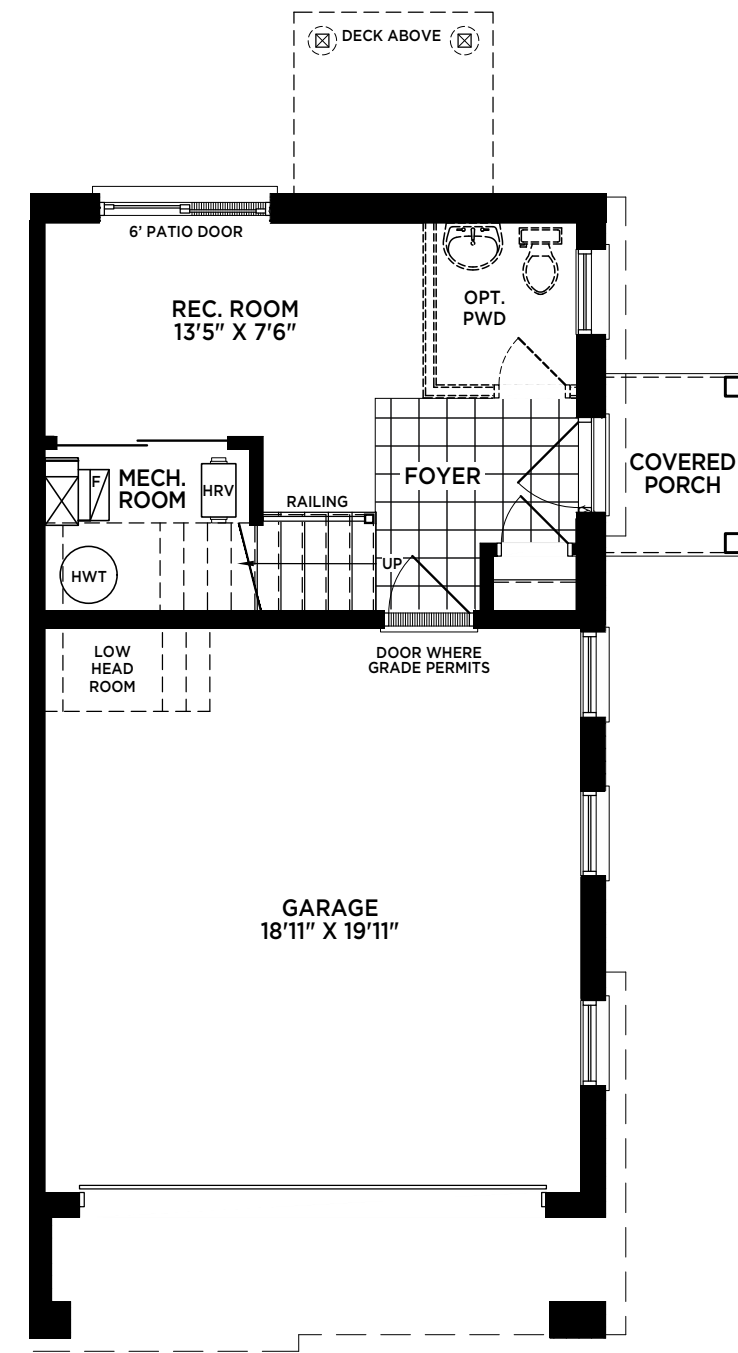
SECOND FLOOR



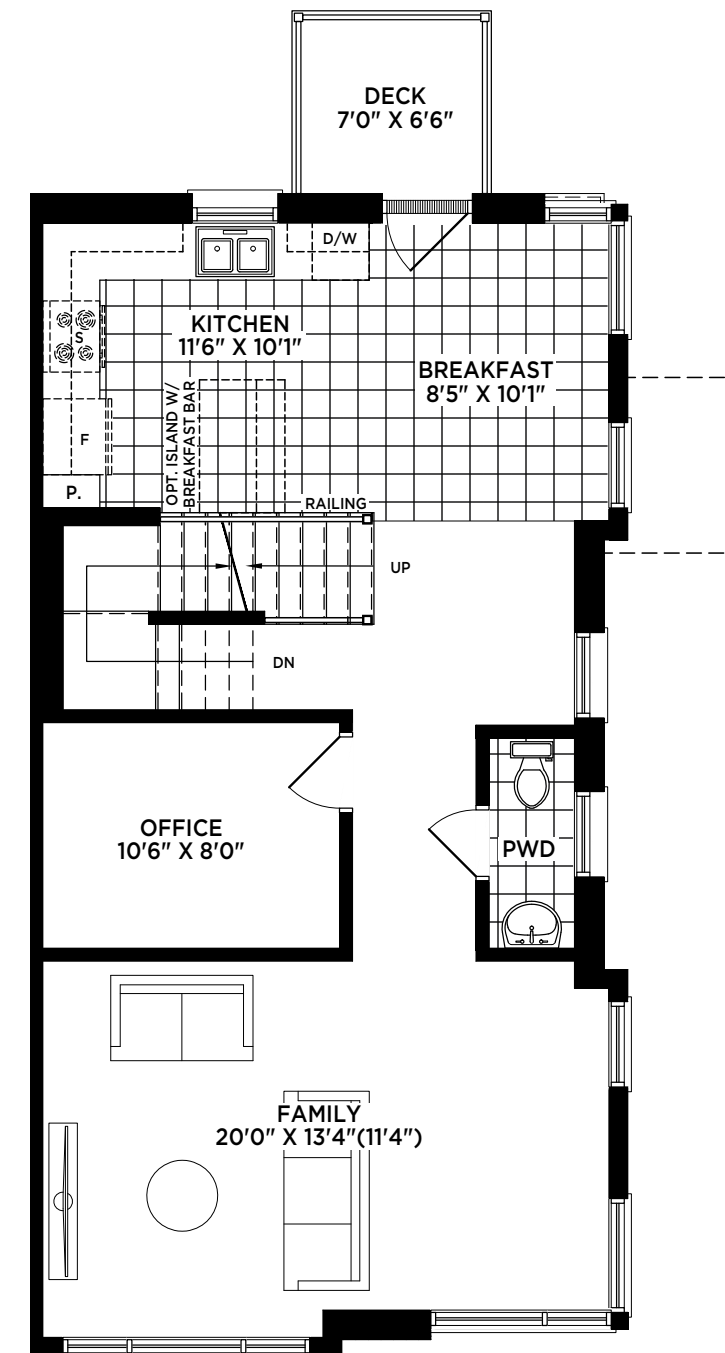
ELEV. 2

# THE HIGHLAND

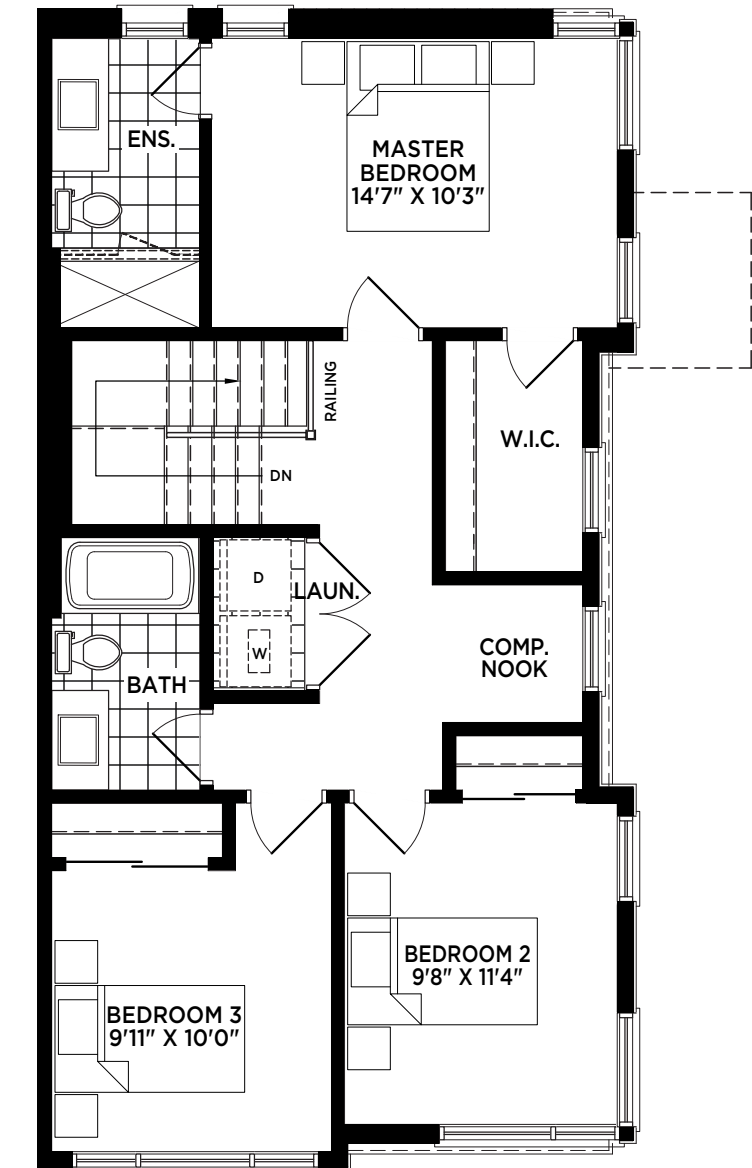
1,956 SQ.FT.



GROUND FLOOR

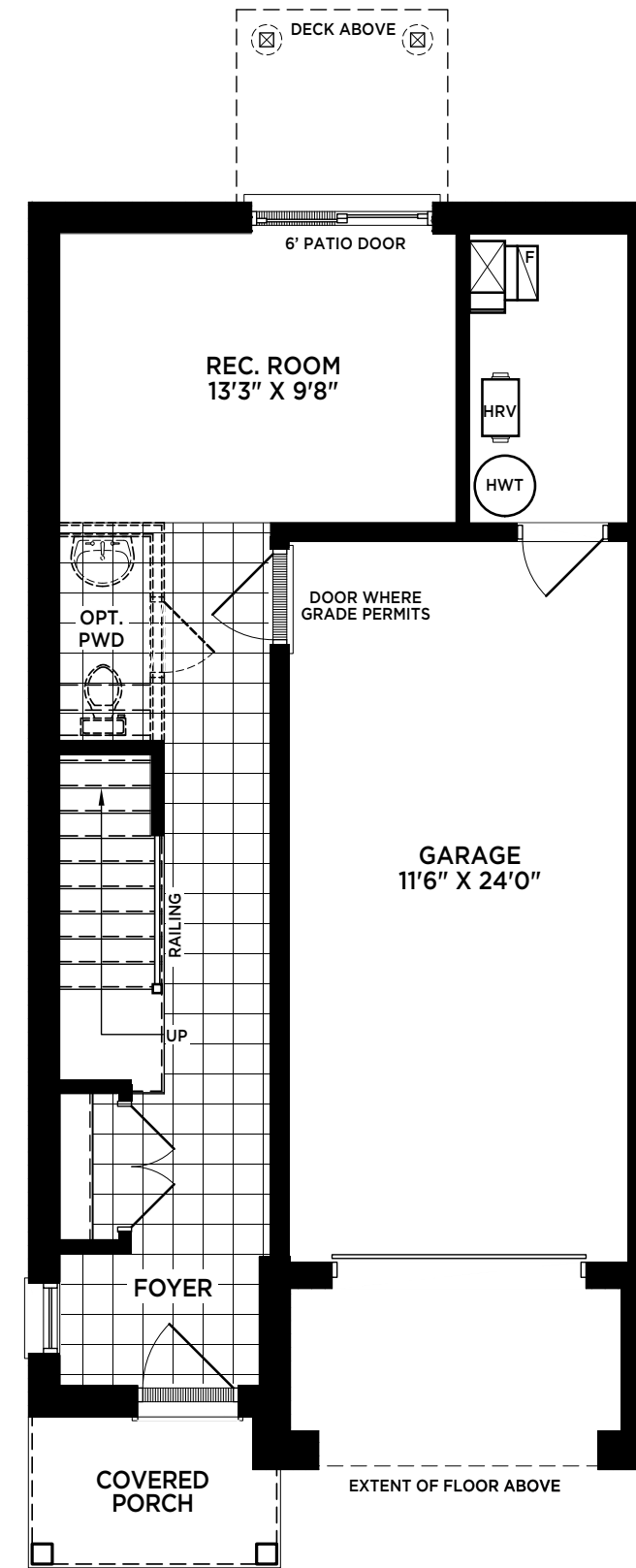


MAIN FLOOR

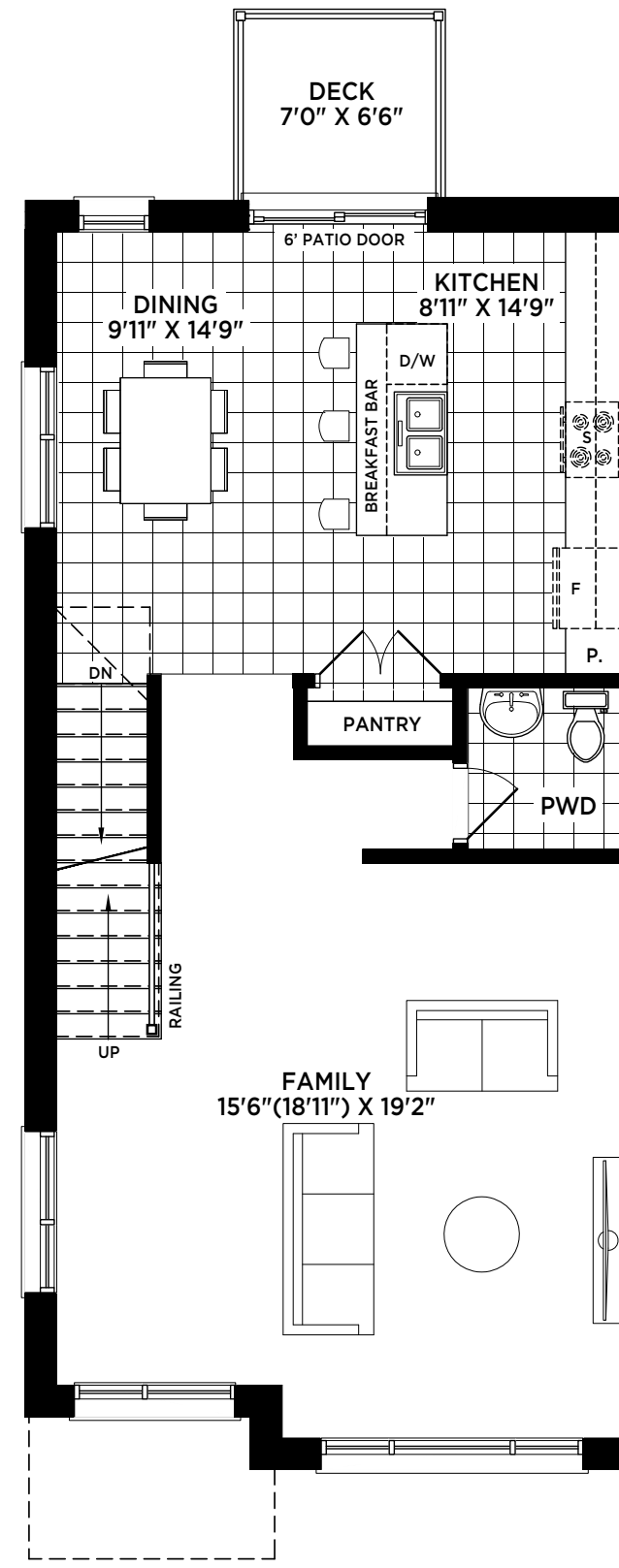


SECOND FLOOR

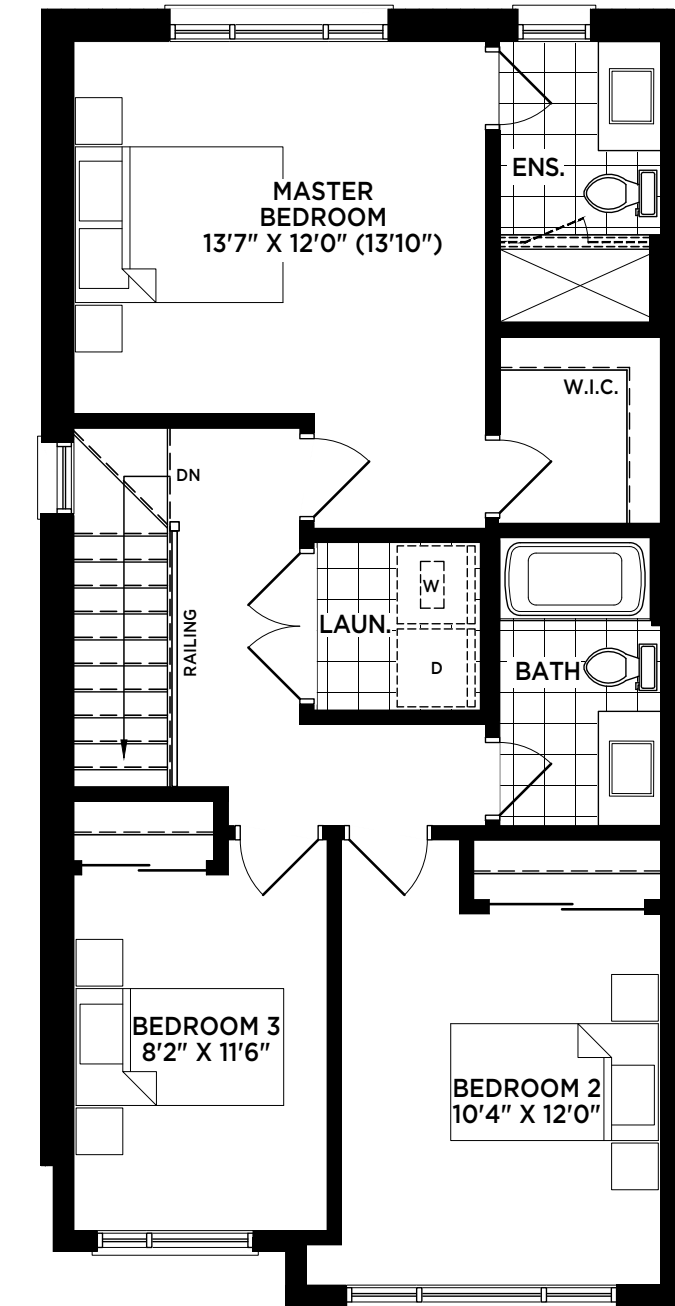
THE  
SCOTSDALE  
2,062 SQ.FT.



GROUND FLOOR



MAIN FLOOR



SECOND FLOOR





# CUSTOM BUILDER

The principals behind Worthington Homes bring 25 years of experience and homeowner satisfaction to Georgetown. By bringing together three highly sought after qualities in the building industry: impeccable design, beautiful custom quality finishes and a level of craftsmanship that is the standard for Worthington Homes. All in all, creating a legacy of luxury that serves as a testament to what true sophistication was meant to be.

WORTHINGTON  
HOMES





# TRAFALGAR SQUARE

TrafalgarSquare.ca

FOLLOW US



WORTHINGTON  
HOMES

KINGRIDGE  
DEVELOPMENTS